



TECHNICAL SHEET

**score de revision**



## Revision Total Knee Replacement



- Constrained revision total knee replacement, with a mobile bearing insert.
- Frontal and sagittal joint stability provided by:
  - Total congruence from 0° to 65° of flexion
  - An intercondylar box and cam
- Bone anchoring ensured by:
  - Tibial and femoral diaphyseal extension stems, with an offset option from the center of the knee
  - Tibial and/or femoral augments

## Femoral component



- ▷ Trochlea and stem oriented at 6°
- ▷ Anterior cut at 6° to preserve the anterior cortex
- ▷ Intercondylar box allowing 2° of varus/valgus
- ▷ Homothetic evolution of the intercondylar box



- ▷ Single centre of rotation from extension to 90° of flexion
- ▷ Implant thickness: 10 mm
- ▷ 4 femoral sizes
- ▷ Cemented femoral component

Tibial components



- ∅ Insert is congruent with the femoral component from hyper-extension to 65° of flexion
- ∅ Intercondylar post with metallic reinforcement
- ∅ Specific design of the plug: conical and cylindrical shape to ensure stability of the insert on the baseplate
- ∅ Flaring of the insert to allow the mixing of sizes
- ∅ Anterior cut-out to protect the patellar tendon
- ∅ Material: machined UHMWPE and stainless steel (metallic reinforcement)
- ∅ Polished joint surface
- ∅ Delta wing and conical shape of the tibial baseplate
- ∅ 7 sizes
- ∅ Cemented tibial baseplate

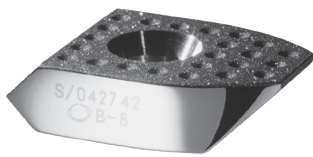
## Accessories



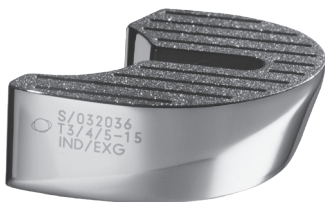
- Offset adapter allowing 3D lateralization between the diaphyseal axis and the center of the knee
- Compatible with femoral and tibial components
- Attachement by Morse taper and screwing
- Offset: 2, 4 and 6 mm

- Tibial and/or femoral extension stem
- Use with or without an offset adapter
- Anti-rotation grooves
- Diameters: 10, 12, 14, 16, 18 and 20 mm
- Lengths: 75, 100, 150 and 200 mm

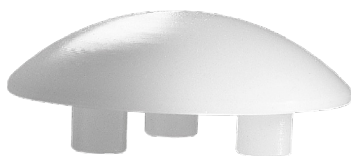
Accessories



- ▷ Screwed posterior and distal femoral augments
- ▷ Thicknesses: 4 and 8 mm
- ▷ Can be mixed with each other



- ▷ Cemented tibial augments: allowing adjustment of the coverage on the cortex
- ▷ Thicknesses: 5, 10 and 15 mm



- ▷ Resurfacing patellar implant NM Ø30, 33 and 36 mm
- ▷ Dome-shaped patella
- ▷ Cemented

Name	Product No.
SCORE revision femoral component – Cemented – Size A, B, C, D RIGHT	1-02003DX (X = A, B, C, D)
SCORE revision femoral component – Cemented – Size A, B, C, D LEFT	1-02003GX (X = A, B, C, D)
Distal femoral augment for Total Knee Prosthesis – Size A, B, C, D thickness 4 mm	1-020104X (X = A, B, C, D)
Distal femoral augment for Total Knee Prosthesis – Size A, B, C, D thickness 8 mm	1-020108X (X = A, B, C, D)
Posterior femoral augment for Total Knee Prosthesis – Size A, B, C, D thickness 4 mm	1-020114X (X = A, B, C, D)
Posterior femoral augment for Total Knee Prosthesis – Size A, B, C, D thickness 8 mm	1-020118X (X = A, B, C, D)
SCORE revision mobile bearing insert – Size A, B, C, D - Thickness 10 mm	1-020161X (X = A, B, C, D)
SCORE revision mobile bearing insert – Size A, B, C, D - Thickness 12 mm	1-020162X (X = A, B, C, D)
SCORE revision mobile bearing insert – Size A, B, C, D - Thickness 14 mm	1-020163X (X = A, B, C, D)
SCORE revision mobile bearing insert – Size A, B, C, D - Thickness 16 mm	1-020164X (X = A, B, C, D)
SCORE revision mobile bearing insert – Size A, B, C, D - Thickness 20 mm	1-020165X (X = A, B, C, D)
SCORE tibial base plate for mobile bearing insert – Cemented – Size 1 to 7	1-0200501 to 1-0200507
Tibial augment for Total Knee Prosthesis - Sizes 1/2, 3/4/5, 6/7 - Thickness 5mm	1-0201211/13/16
Tibial augment for Total Knee Prosthesis - Sizes 1/2, 3/4/5, 6/7 - Thickness 10mm RM/LL	1-0201221/23/26
Tibial augment for Total Knee Prosthesis - Sizes 1/2, 3/4/5, 6/7 - Thickness 10mm RL/LM	1-0201241/43/46
Tibial augment for Total Knee Prosthesis - Sizes 1/2, 3/4/5, 6/7 - Thickness 15mm RM/LL	1-0201231/33/36
Tibial augment for Total Knee Prosthesis - Sizes 1/2, 3/4/5, 6/7 - Thickness 15mm RL/LM	1-0201251/53/56
Offset adapter for Total Knee Prosthesis - 2 mm, 4 mm and 6 mm	1-0201302/04/06
Extension Stem for Total Knee Prosthesis - Ø10 mm length 75, 100, 150mm	1-0200710 to 1-0200712
Extension Stem for Total Knee Prosthesis - Ø12 mm length 75, 100, 150, 200mm	1-0200720 to 1-0200723
Extension Stem for Total Knee Prosthesis - Ø14 mm length 75, 100, 150, 200mm	1-0200730 to 1-0200733
Extension Stem for Total Knee Prosthesis - Ø16 mm length 100, 150mm	1-0200741 to 1-0200742
Extension Stem for Total Knee Prosthesis - Ø18 mm length 100, 150mm	1-0200751 to 1-0200752
Extension Stem for Total Knee Prosthesis - Ø20 mm length 100, 150mm	1-0200761 to 1-0200762
Cemented resurfacing patellar implant NM - Ø 30, 33, 36 mm	1-0200830/33/36

**Customer Service-France:**

Porte du Grand Lyon,  
01700 Neyron – France  
Phone: **+33 (0)4 37 85 19 19**  
Fax: +33 (0)4 37 85 19 18  
E-mail : [amplitude@amplitude-ortho.com](mailto:amplitude@amplitude-ortho.com)

**Customer Service-Export :**

11, cours Jacques Offenbach,  
ZA Mozart 2,  
26000 Valence – France  
Phone: **+33 (0)4 75 41 87 41**  
Fax: +33 (0)4 75 41 87 42