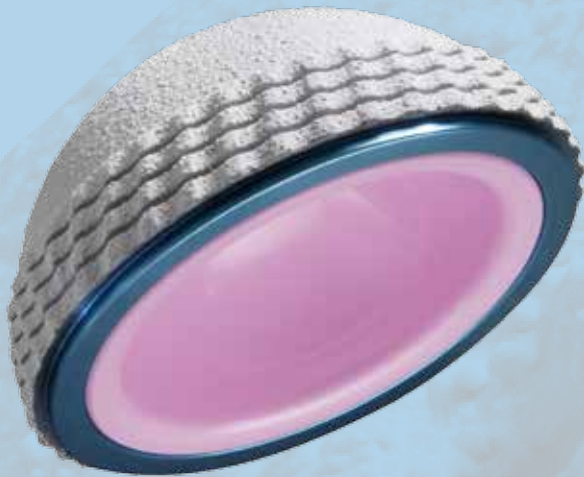


H² without holes
Cementless cup
BIOLOX[®] delta ceramic liner

H² without holes: important features



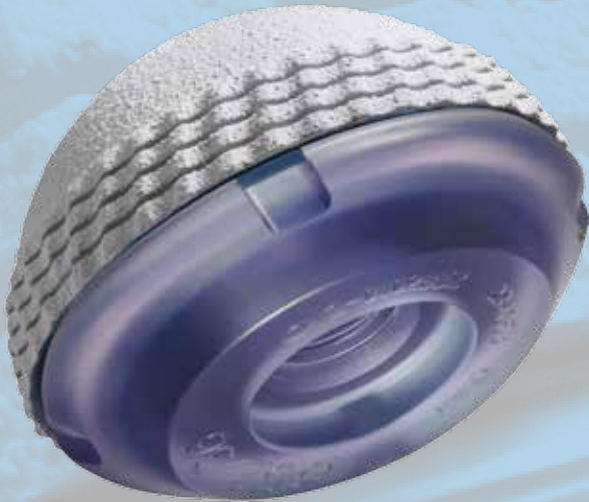
- Hemispherical acetabular cup with flat pole
- Equatorial press-fit
- Inverted grooves (chevron configuration)
- Materials: Titanium and dual coating of sprayed titanium (80 µm) and HA (80 µm)

- BIOLOX® Delta ceramic liner is pre-assembled with the cup

- Advantages of BIOLOX® Delta ceramic:
 - Improved strength due to reduced grain size and increased density⁽¹⁾

⁽¹⁾ BIOLOX® Delta "Scientific Information and Performance Data", MT140034 - EN - 2.000 - 1501

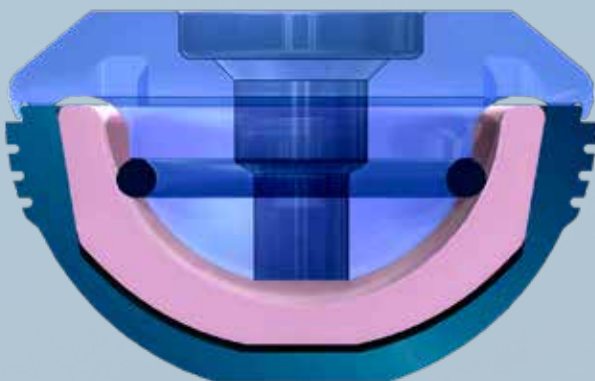
H² without holes: important features



- Single-use impaction plate:
 - interface between cup and impactor
 - cup impacted without jarring liner (plate does not touch ceramic liner)
 - implant is still visible intra-operatively because plate diameter is less than cup diameter



- O-ring helps to:
 - centre the plate relative to the liner
 - hold the liner in the cup
- Materials:
 - polycarbonate plate
 - silicone O-ring



- Rests on the outer periphery of the H² cup without holes
- Plate can be screwed with various types of straight or curved impactors

H² without holes: implants

CE 0086

HORIZON® II acetabular cup with BIOLOX® Delta ceramic insert 46/28	1-0109746
HORIZON® II acetabular cup with BIOLOX® Delta ceramic insert 48/28	1-0109748
HORIZON® II acetabular cup with BIOLOX® Delta ceramic insert 48/32	1-0109848
HORIZON® II acetabular cup with BIOLOX® Delta ceramic insert 50/32	1-0109850
HORIZON® II acetabular cup with BIOLOX® Delta ceramic insert 52/32	1-0109852
HORIZON® II acetabular cup with BIOLOX® Delta ceramic insert 52/36	1-0109952
HORIZON® II acetabular cup with BIOLOX® Delta ceramic insert 54/36	1-0109954
HORIZON® II acetabular cup with BIOLOX® Delta ceramic insert 56/36	1-0109956
HORIZON® II acetabular cup with BIOLOX® Delta ceramic insert 58/36	1-0109958
HORIZON® II acetabular cup with BIOLOX® Delta ceramic insert 60/36	1-0109960
HORIZON® II acetabular cup with BIOLOX® Delta ceramic insert 62/36	1-0109962
BIOLOX® delta ceramic femoral head - 10/12 taper - Ø 28 mm short neck	1-0191101
BIOLOX® delta ceramic femoral head - 10/12 taper - Ø 28 mm medium neck	1-0191102
BIOLOX® delta ceramic femoral head - 10/12 taper - Ø 28 mm long neck	1-0191103
BIOLOX® delta ceramic femoral head - 10/12 taper - Ø 32 mm short neck	1-0191111
BIOLOX® delta ceramic femoral head - 10/12 taper - Ø 32 mm medium neck	1-0191112
BIOLOX® delta ceramic femoral head - 10/12 taper - Ø 32 mm long neck	1-0191113
BIOLOX® delta ceramic femoral head - 10/12 taper - Ø 36 mm short neck	1-0191121
BIOLOX® delta ceramic femoral head - 10/12 taper - Ø 36 mm medium neck	1-0191122
BIOLOX® delta ceramic femoral head - 10/12 taper - Ø 36 mm long neck	1-0191123

Optional

HORIZON® II acetabular cup with BIOLOX® Delta ceramic insert 64/36	1-0109964
--	-----------

Reference: FT.CB.031/1.0

CHALVINI création - 500 994 978 FCS Lyon