

## E.T.O.I.L.E.® System Ergonomic use of space



- Adjustable to suit any leg length



### Choice of connection E.T.O.I.L.E.®

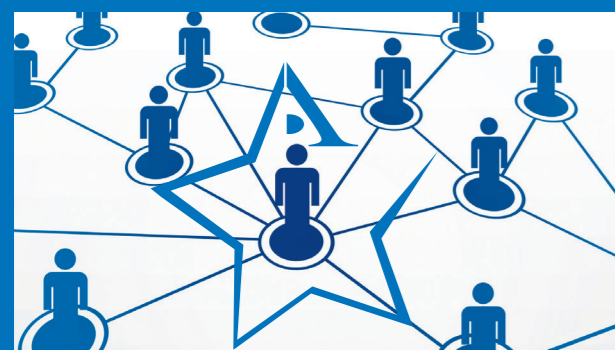
- Specific adapted connector
- Universal orthopedic tray

### User-friendly and functional design

#### Minimum « footprint » which enables

- Optimum storage when not in use
- Ease of movement around it
- Rapid transport
- Weight: 28 kg

## E.T.O.I.L.E.® System Mastery of the system



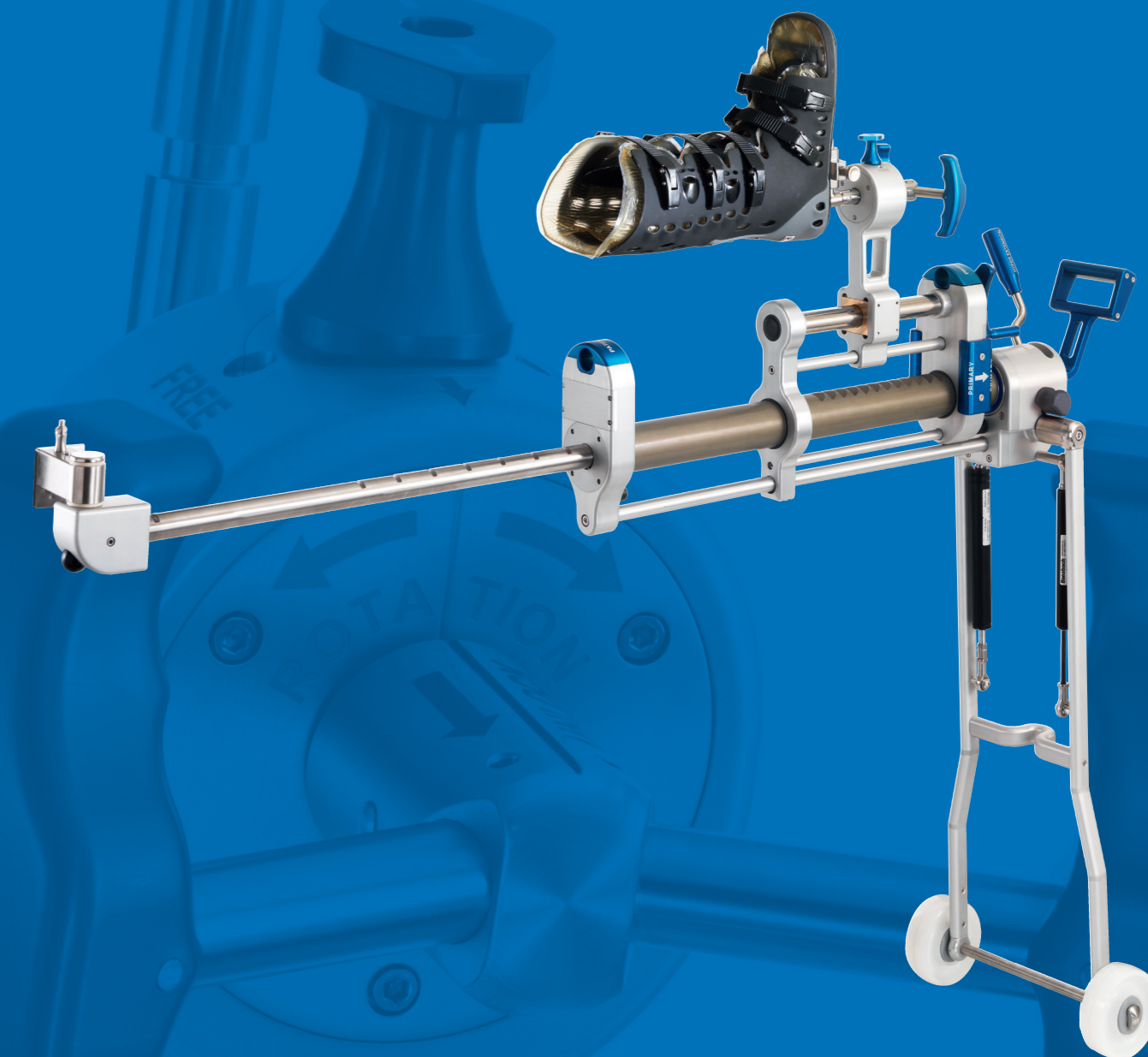
- Training and Reference Centers
- Creation of a network of users
- Clinical follow-up

## E.T.O.I.L.E.® System Reference



E.T.O.I.L.E.® table extension	3-0402800
Footprint	3-0403400

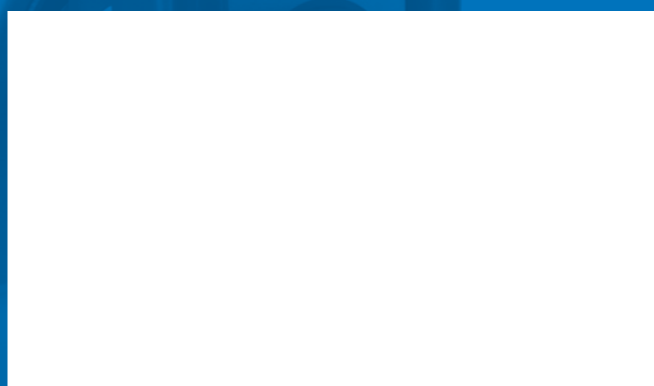
Reference : DC.GB.05/12.0



AMPLITUDE®

**E.T.O.I.L.E.® System**  
Orthopedic Table Extension with  
Instruments for Surgical Exposure

Distributed by:



AMPLITUDE®

E.T.O.I.L.E.® System

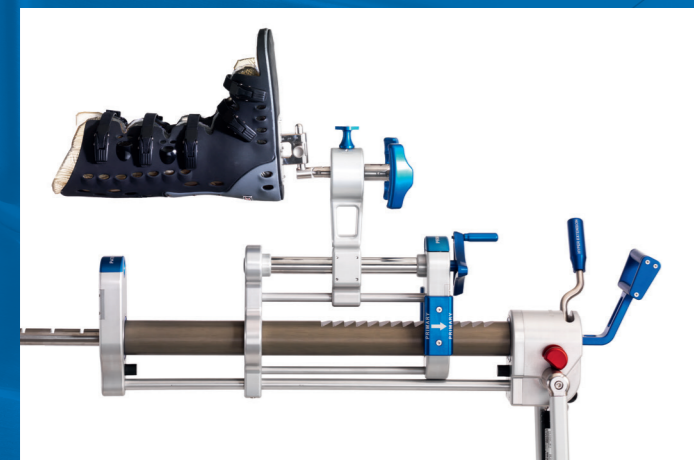
AMPLITUDE®

Customer Service-France: Porte du Grand Lyon, 01700 Neyron, France. Tel.: + 33 (0)4 37 85 19 19. Fax: + 33 (0)4 37 85 19 18  
Customer Service Export: 11, cours Jacques Offenbach, Zone Mozart 2, 26000 Valence, France. Tel.: + 33 (0)4 75 41 87 41. Fax: + 33 (0)4 75 41 87 42  
E-mail: [amplitude@amplitude-ortho.com](mailto:amplitude@amplitude-ortho.com) Internet: [www.amplitude-ortho.com](http://www.amplitude-ortho.com)

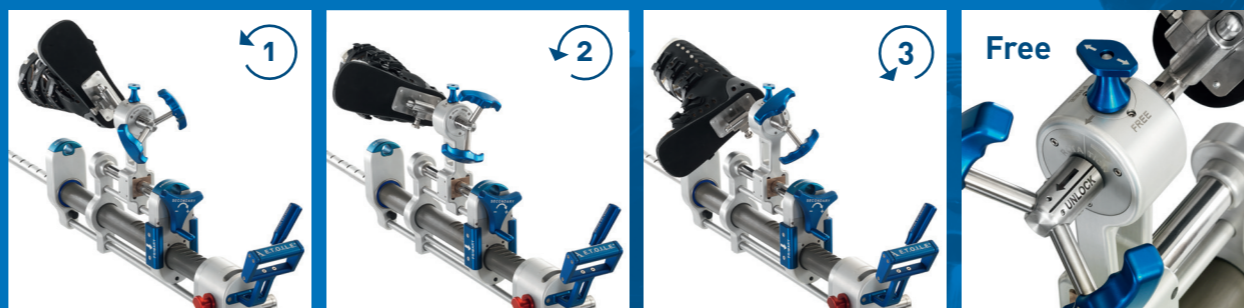
## E.T.O.I.L.E.® System Orthopedic Table Extension with Instruments Linked to Exposure

Meet the needs associated with the demands of anterior approach surgery

Support for the quality of the surgical procedure



Best visibility for the surgical site



Flexible use



Comfortable positioning of patient's leg during surgical interventions



Functional design

## E.T.O.I.L.E.® System Security of satellite



### Security of the foot

- Security ensured by adjustable height
- Comfort maintained by internal reinforcement
- Adapted to suit morphology of the human foot

Easy placement of foot with its characteristic attachment points

Easy to clean exterior / interior

## E.T.O.I.L.E.® System System control



### Control of secured movements

- Indexed non-return system
- Stability reinforced by pistons
- Progressive and controlled manipulations (primary traction, hyperextension and external rotation)
- Security of hyperextension and traction, achieved by an independent system
- Specific handholds with ergonomics related to movement



- Movements and engraved neutral position for reliability and simple use