

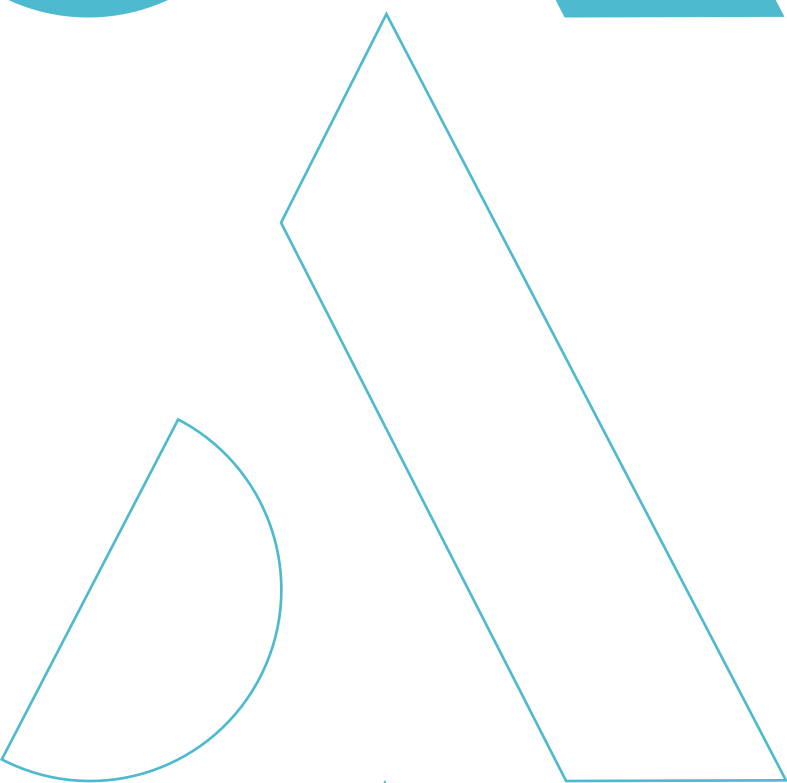


amplitude



TECHNICAL SHEET

 **score[®] revision**



Revision Total Knee Replacement



- ▷ Constrained revision total knee replacement, with a mobile bearing insert.
- ▷ Frontal and sagittal joint stability provided by:
 - Total congruence from 0° to 65° of flexion
 - An intercondylar box and cam
- ▷ Bone anchoring ensured by:
 - Tibial and femoral diaphyseal extension stems, with an offset option from the center of the knee
 - Tibial and/or femoral wedges

Femoral component

- ▷ Trochlea and stem oriented at 6°
- ▷ Anterior cut at 6° to preserve the anterior cortex
- ▷ Intercondylar box allowing 2° of varus/valgus
- ▷ Homothetic evolution of the intercondylar box



- ▷ Single centre of rotation from extension to 90° of flexion
- ▷ Implant thickness: 10 mm
- ▷ 4 femoral sizes
- ▷ Cemented femoral component

Tibial components



▷ Insert is congruent with the femoral component from hyper-extension to 65° of flexion

▷ Intercondylar post with metallic reinforcement

▷ Specific design of the plug: conical and cylindrical shape to ensure stability of the insert on the baseplate

▷ Flaring of the insert to allow the mixing of sizes

▷ Anterior cut-out to protect the patellar tendon

▷ Material: machined UHMWPE

▷ Mirror-polished joint surface

▷ Delta wing and conical shape of the tibial baseplate

▷ 7 sizes

▷ Cemented tibial baseplate

Accessories

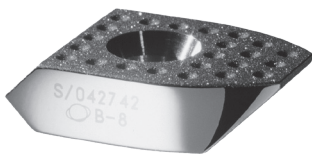


- ▷ Offset connector allowing 3D lateralization between the diaphyseal axis and the center of the knee
- ▷ Compatible with femoral and tibial component
- ▷ Attachement by Morse taper and screwing
- ▷ Offset: 2, 4 and 6 mm



- ▷ Tibial and/or femoral extension stem
- ▷ Use with or without an offset connector
- ▷ Anti-rotation grooves
- ▷ Diameters: 10, 12, 14, 16, 18 and 20 mm
- ▷ Lengths: 75, 100, 150 and 200 mm

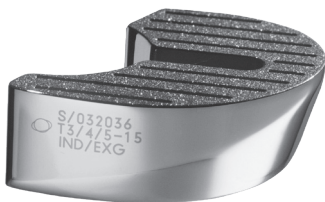
Accessories



▷ Screwed posterior and distal femoral wedge

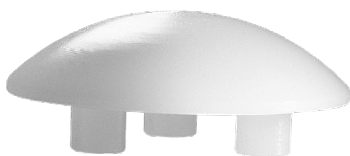
▷ Thicknesses: 4 and 8 mm

▷ Can be mixed with each other



▷ Cemented tibial half-wedges: allowing adjustment of the coverage on the cortex

▷ Thicknesses: 5, 10 and 15 mm



▷ Resurfacing patellar implant \varnothing 30, 33 and 36 mm

▷ Dome-shaped patella

▷ Cemented



Name	Product No.
SCORE® revision femoral component – Cemented – Size A, B, C, D RIGHT	1-02003DX (X = A, B, C, D)
SCORE® revision femoral component – Cemented – Size A, B, C, D LEFT	1-02003GX (X = A, B, C, D)
Distal femoral block for Total Knee Prosthesis – Size A, B, C, D thickness 4 mm	1-020104X (X = A, B, C, D)
Distal femoral block for Total Knee Prosthesis – Size A, B, C, D thickness 8 mm	1-020108X (X = A, B, C, D)
Posterior femoral block for Total Knee Prosthesis – Size A, B, C, D thickness 4 mm	1-020114X (X = A, B, C, D)
Posterior femoral block for Total Knee Prosthesis – Size A, B, C, D thickness 8 mm	1-020118X (X = A, B, C, D)
SCORE® revision mobile bearing insert – Size A, B, C, D - Thickness 10 mm	1-020161X (X = A, B, C, D)
SCORE® revision mobile bearing insert – Size A, B, C, D - Thickness 12 mm	1-020162X (X = A, B, C, D)
SCORE® revision mobile bearing insert – Size A, B, C, D - Thickness 14 mm	1-020163X (X = A, B, C, D)
SCORE® revision mobile bearing insert – Size A, B, C, D - Thickness 16 mm	1-020164X (X = A, B, C, D)
SCORE® revision mobile bearing insert – Size A, B, C, D - Thickness 20 mm	1-020165X (X = A, B, C, D)
SCORE® tibial base plate for mobile bearing insert – Cemented – Size 1 to 7	1-0200501 to 1-0200507
Tibial half-block for Total Knee Prosthesis - Sizes 1/2, 3/4/5, 6/7 - Thickness 5mm	1-0201211/13/16
Tibial half-Block for Total Knee Prosthesis - Sizes 1/2, 3/4/5, 6/7 - Thickness 10mm RM/LL	1-0201221/23/26
Tibial half-Block for Total Knee Prosthesis - Sizes 1/2, 3/4/5, 6/7 - Thickness 10mm RL/LM	1-0201241/43/46
Tibial half-Block for Total Knee Prosthesis - Sizes 1/2, 3/4/5, 6/7 - Thickness 15mm RM/LL	1-0201231/33/36
Tibial half-Block for Total Knee Prosthesis - Sizes 1/2, 3/4/5, 6/7 - Thickness 15mm RL/LM	1-0201251/53/56
Offset connector for Total Knee Prosthesis - 2 mm, 4 mm and 6 mm	1-0201302/04/06
Extension Stem for Total Knee Prosthesis - Cemented - Ø10 length 75, 100, 150mm	1-0200710 to 1-0200712
Extension Stem for Total Knee Prosthesis - Cemented - Ø12 length 75, 100, 150, 200mm	1-0200720 to 1-0200723
Extension Stem for Total Knee Prosthesis - Cemented - Ø14 length 75, 100, 150, 200mm	1-0200730 to 1-0200733
Extension Stem for Total Knee Prosthesis - Cemented - Ø16 length 100, 150, 200mm	1-0200741 to 1-0200743
Extension Stem for Total Knee Prosthesis - Cemented - Ø18 length 100, 150, 200mm	1-0200751 to 1-0200753
Extension Stem for Total Knee Prosthesis - Cemented - Ø20 length 100, 150, 200mm	1-0200761 to 1-0200763
Cemented resurfacing patellar implant - Ø 30, 33, 36 mm	1-0200830/33/36

Customer Service-France:

Porte du Grand Lyon,
01700 Neyron – France
Phone: **+33 (0)4 37 85 19 19**
Fax: +33 (0)4 37 85 19 18
E-mail : amplitude@amplitude-ortho.com

Customer Service-Export :

11, cours Jacques Offenbach,
ZA Mozart 2,
26000 Valence – France
Phone: **+33 (0)4 75 41 87 41**
Fax: +33 (0)4 75 41 87 42